



INNOVATIONS 23.3

SOFTWARE INNOVATIONS

The new software version Jaltest 23.3 once again offers more improvements and innovations that consolidate this tool as a benchmark in multi-brand diagnostics for commercial vehicles, agricultural equipment, OHW equipment, material handling equipment and vessels.

With the innovations of the graphic interface, it is possible to:

- Show the battery voltage during the system scan processes.
- Set the fault code display during the system scan processes.
- Hide the information panel in action steps with measurements.
- Restart the connection when losing the communication with systems in different sections of the application.
- Customize connection images.
- Set measurement groups in the data recorder function.

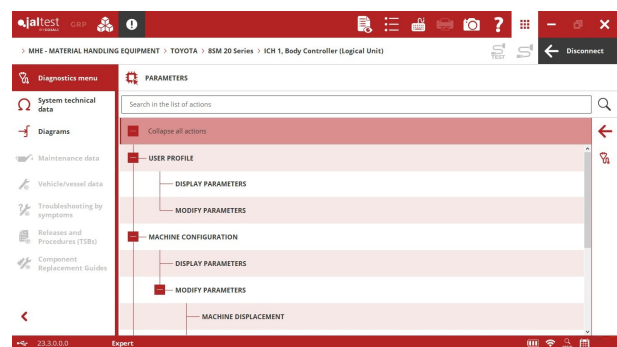
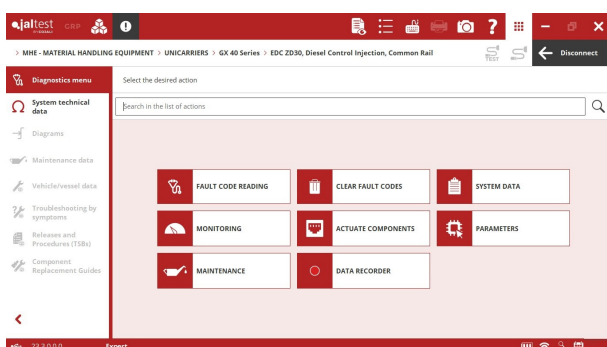
In addition, with GRP it is possible to associate diagnostics reports to license plates and/or VIN chassis numbers that do not belong to any vehicle from the list.

BRANDS AND MODELS

Take into account that this document is only a summary of the most relevant information of this new version. For further information, please visit Jaltest Report.

The new brands in Jaltest are listed below: **BAOLI**, **NISSAN**, **SELIC**, **THALER**, **TCM** and **ZPMC**.

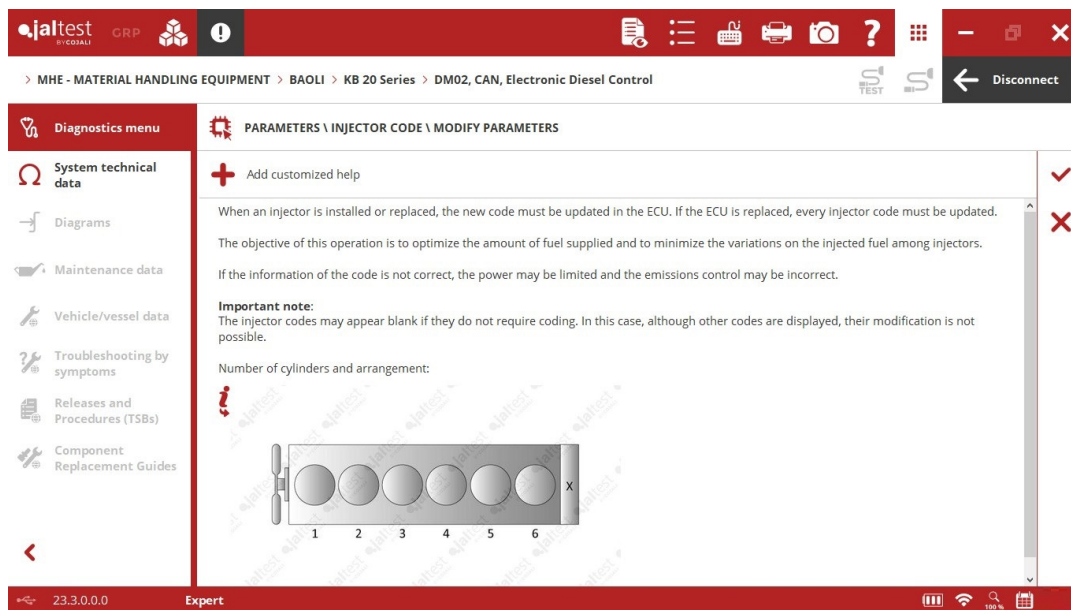
In addition, the number of models in the following brands has increased: **BOBCAT** (TR Series family), **BT** (Réflex, Option, Vector and Levio families), **JUNGHEINRICH** (ECE, EMC and ERC families), **MANITOU** and **UNICARRIERS**.



DIAGNOSTICS AND SYSTEMS

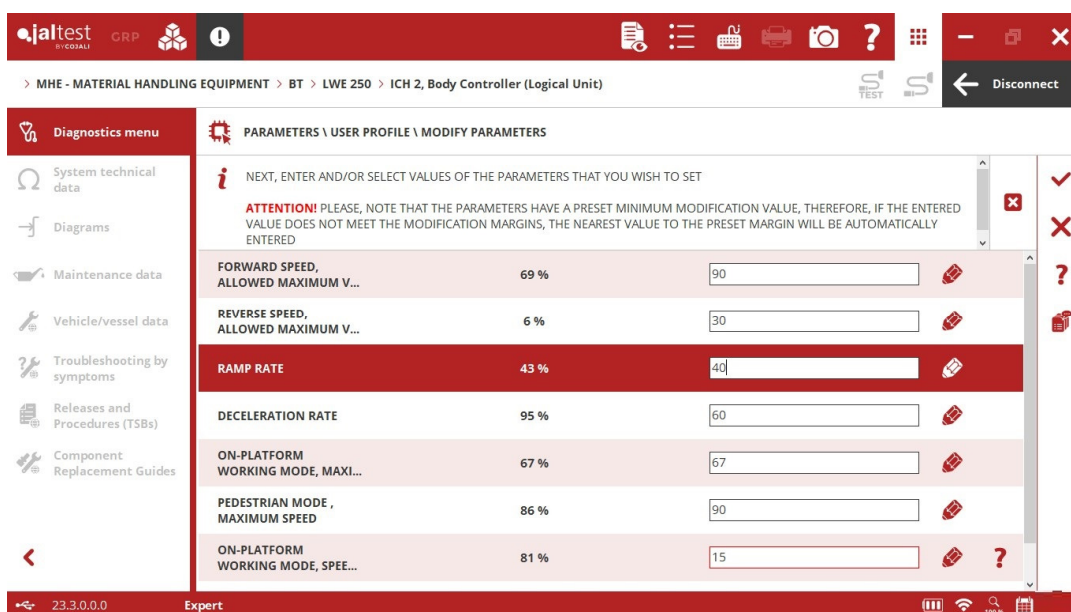
BAOLI

DM02/03 Stage V engine control system, injector coding.

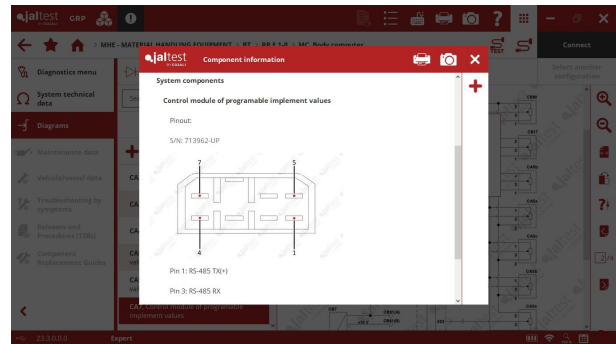
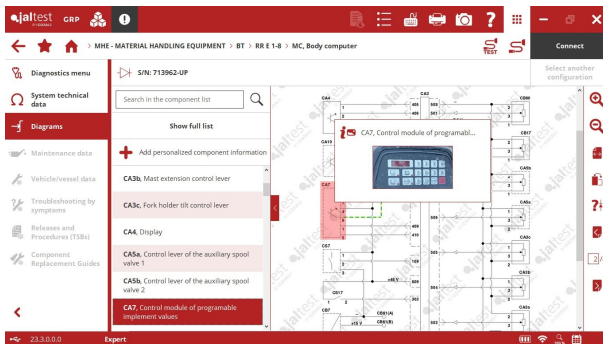


BT

⊕ **ICH2** central computer that includes advanced functions of parameter setting and maintenance reset for electric machines such as pallet jacks or stackers.



In addition, new wiring diagram configurations of the **MC** central computer available for retractable machines.

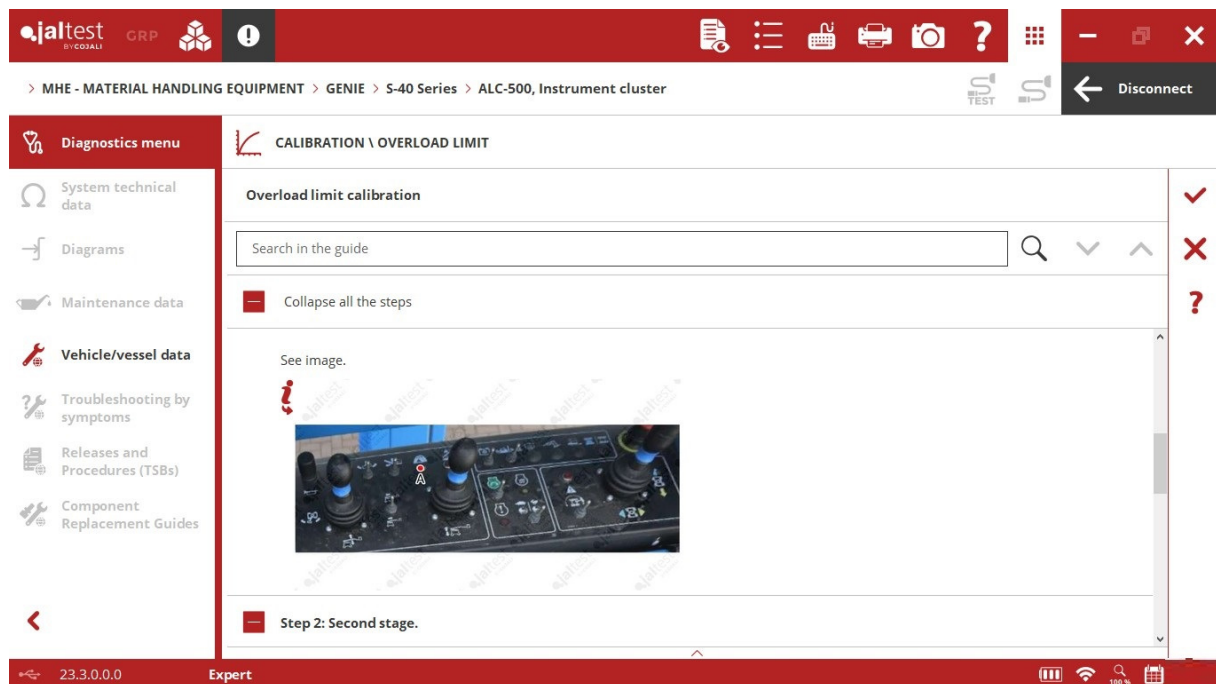


CURTIS

CPM power module with parameter modification for the different settings of the **1212** and **1230** power modules.

GENIE

⊕ **ALC-500** instrument cluster for models of the **S series** lift platform, calibration processes of the joystick or the overload limit.

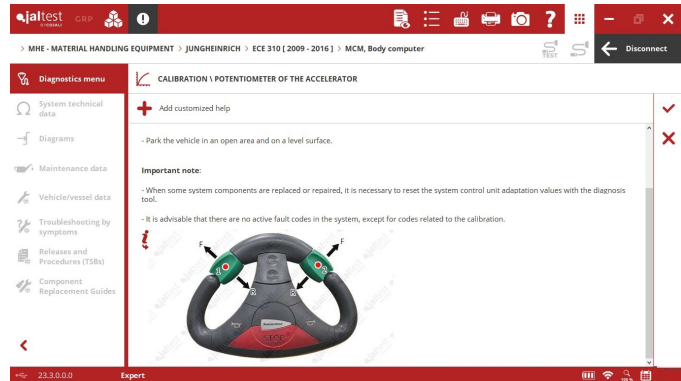


JUNGHEINRICH

MCM central computer for models of **EJC series** or **EJD series** electric stackers, modification of driving program, traction speed, equipment, etc.

⊕ **MCM** central computer for **ECE series** models, parameter modification, steering calibration, tiller, etc.

In addition, new wiring diagram configurations of the **MCM** central computer available for the families of **EJE series, ERE series, EJC Series** pallet jacks and of the **Perkins 1104D** engine control system for models of the **DFG Series** family.



LINDE

EDC VW (CPYA) engine control system for models of internal combustion, parameter display, maintenance services, etc.

MAGNI

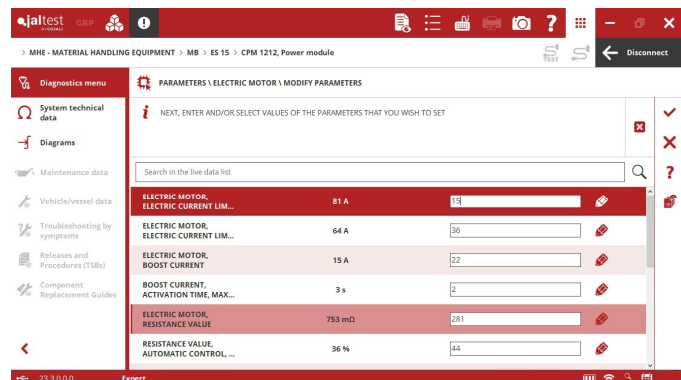
Volvo EMS V3 engine control system, DPF parameter modification, engine revolution limitation, etc.

In addition, new wiring diagram configurations available for **Deutz** and **Perkins** engines.

MB

⊕ **CPM 1212** power module for pallet jacks or stackers of **EPT, ES** and **PRL Series** that include the parameter setting such as: Maximum flow of the fork raising.

In addition, new wiring diagram configurations available.



TOYOTA

ICH central computer for pallet jacks and stackers, system checks, parameter setting of the hydraulic system, user block management, etc.

UNICARRIER

⊕ **EDC ZD30** engine control system for **Nissan** engines, parameter display, maintenance services, etc.



WACKER NEUSON

EMR4 EDC 17 CV52 engine control system for **Deutz** engines, system checks, maintenance services, etc.

ZAPI

New wiring diagram configurations available for **SEM-1**, **AC-1**, **EPS** or **DUAL ACE-2** power modules.

