



## INNOVATIONS 23.3

# SOFTWARE INNOVATIONS

---

The new software version Jaltest 23.3 once again offers more improvements and innovations that consolidate this tool as a benchmark in multi-brand diagnostics for commercial vehicles, agricultural equipment, OHW equipment, material handling equipment and vessels.

With the innovations of the graphic interface, it is possible to:

- Show the battery voltage during the system scan processes.
- Set the fault code display during the system scan processes.
- Hide the information panel in action steps with measurements.
- Restart the connection when losing the communication with systems in different sections of the application.
- Customize connection images.
- Set measurement groups in the data recorder function.

In addition, with GRP it is possible to associate diagnostics reports to license plates that do not belong to any vessel from the list.

# DIAGNOSTICS AND SYSTEMS

---

Take into account that this document is only a summary of the most relevant information of this new version. For further information, please visit Jaltest Report.

## INBOARD

### CATERPILLAR

New wiring diagram configurations available for **3508C**, **3512C** and **3516C** engines.

### HYUNDAI SEASALL

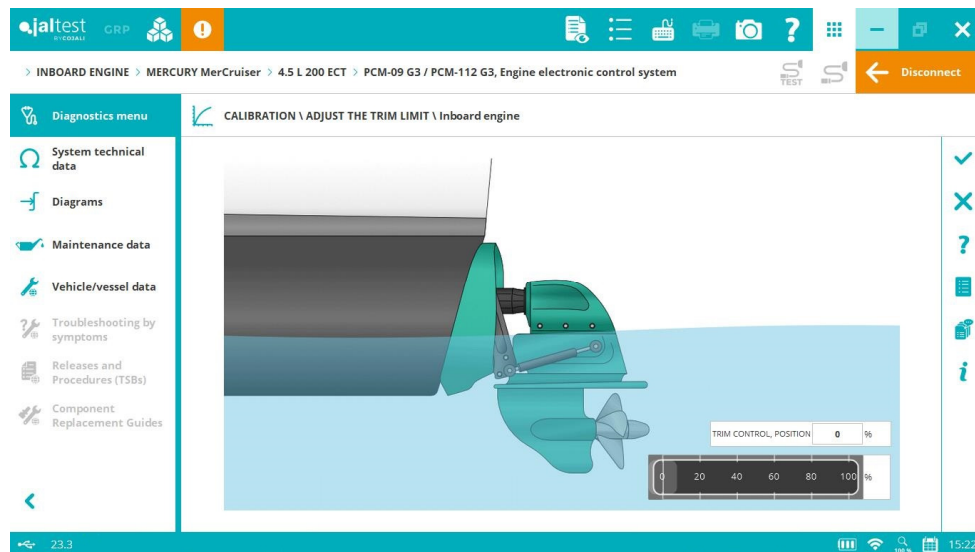
Vessel technical data and maintenance services for **S220**, **S250** and **S270** engines.

### MERCURY MERCUISER

New software references of the **PCM-112 G3** engine control system applicable to the latest engines.

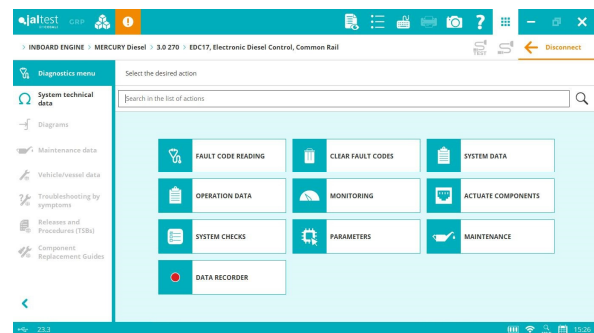
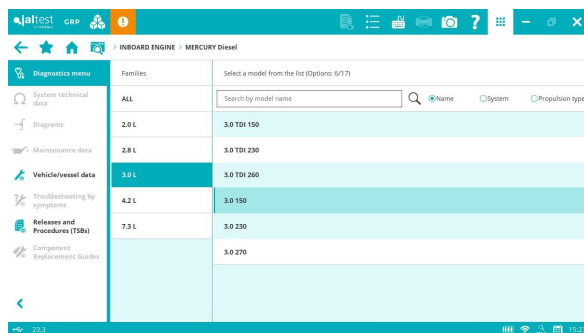
**PCM-09** and **PCM-112** engine control systems, improvements in the diagnostics process with new Freeze Frame Data (FFD).

System Display in the calibration of the trim adjustment sensor and the trim limit adjustment in all systems compatible with this calibration.



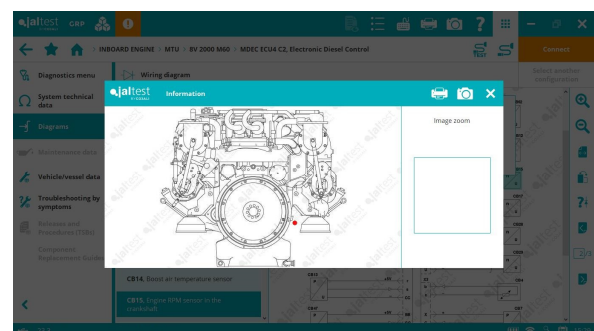
## MERCURY DIESEL

- ⊕ **EDC 17** engine control system for the new **3.0 L** models.
- ⊕ **3.0 150, 3.0 230** and **3.0 270** models that include the lever control system.



MTU

- ⊕ Models equipped with the **MDEC ECU-4** engine control system that include wiring diagram configurations, images, vessel technical data, maintenance services and **SMART** guides.



## ROTAX

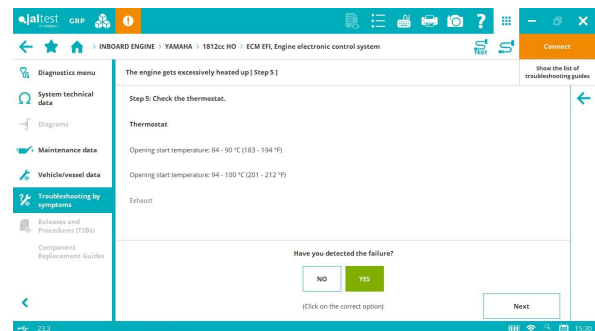
New software references in the engine control systems of the brand.

## MTU

⊕ **D112-62-M** model equipped with the **EMS PDE** engine control system and the **COO** coordinator.

## YAMAHA

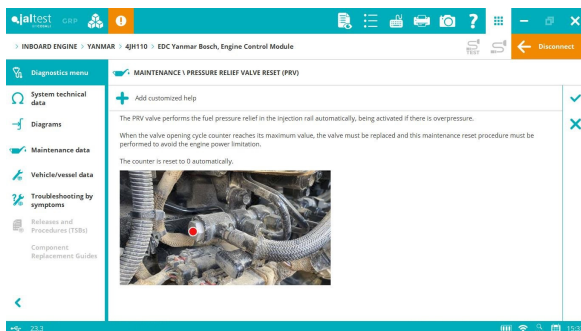
**SMART** guides for all models.



## YANMAR

⊕ **JDC 216A** and **216A9** diagnostics cables for **SY Series** models.

**Yanmar Bosch** engine control system, PRV valve reset and data record.



JDC 213.9 + JDC 216A9/JDC 100 + JDC 213.9 + JDC 216A



## OUTBOARD

## HIDEA

⊕ **JDC 631A** diagnostics cable.

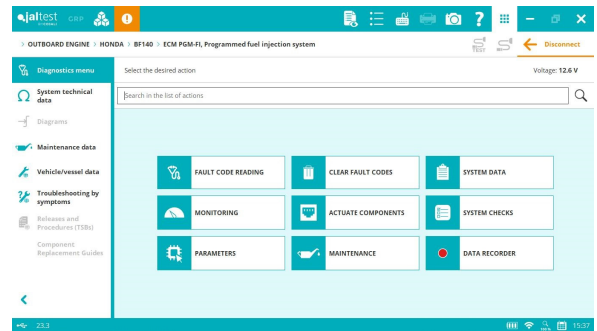
JDC 213.9 + JDC 631A



## HONDA

⊕ **BF140, BF40 Jet, BF65 Jet and BF105 Jet** models that include wiring diagram configurations, images, vessel technical data, maintenance services and **SMART** guides.

In addition, particular **SMART** guides have been added to all brand models.



## MARINER

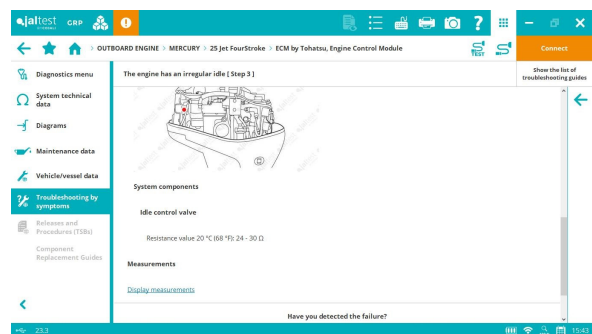
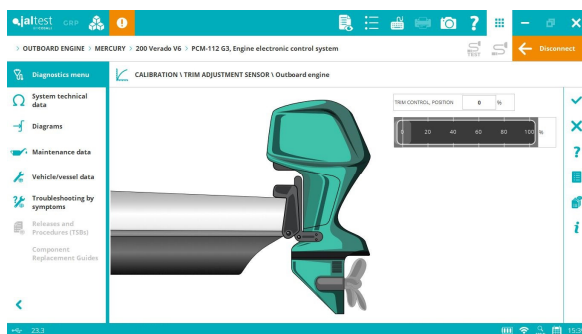
**SMART** guides for **25** and **30 Four-Stroke** models with **Tohatsu** base.

## MERCURY

⊕ **25 Jet Four-Stroke** model that includes technical information.

New software references of the **PCM-112 G3** engine control system applicable to the latest engines. In addition, the diagnostics process has been improved with the new Freeze Frame Data (FFD).

System Display in the calibration of the trim adjustment sensor and the trim limit adjustment in all systems compatible with this calibration.



## SUZUKI

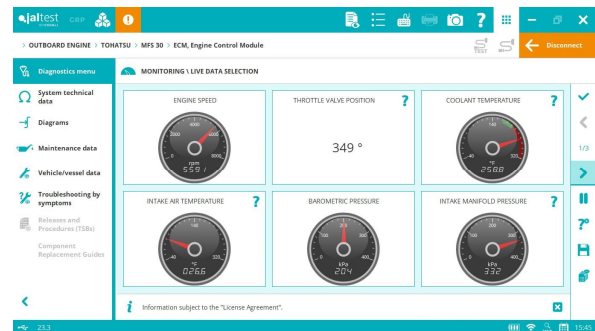
System Display in the **BCM** lever control system.

## TOHATSU

⊕ Models of the **MFS Series** family that include wiring diagram configurations, images, vessel technical data and maintenance services.

New software references of the system in the **BFT** model.

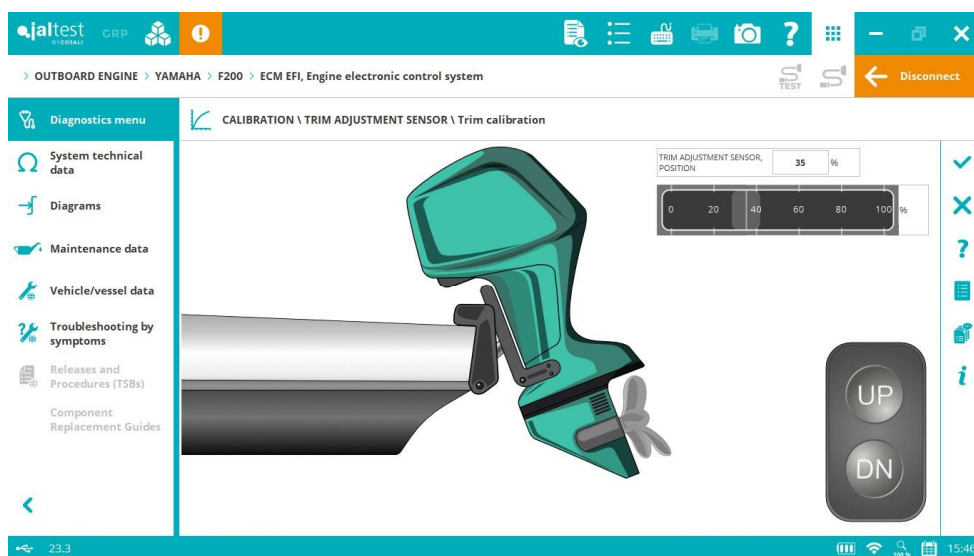
**SMART** guides for all models.



## YAMAHA

Rotor reset and trim calibration in all compatible models.

**SMART** guides for all models.

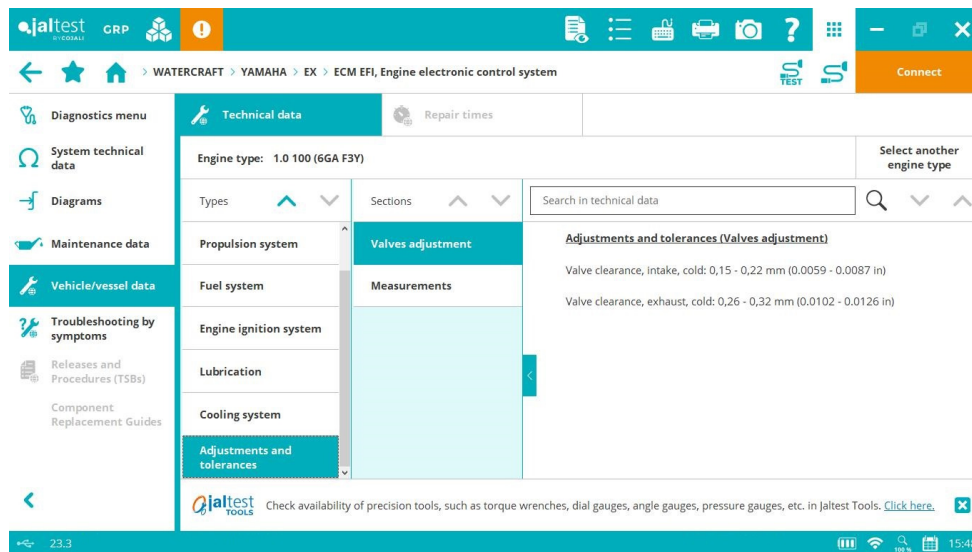


## WATERCRAFT

### YAMAHA

Vessel technical data and maintenance services for **EX, EX Sport, EX Deluxe, EX Limited** and **EXR** models.

**SMART** guides for all models.



## STATIONARY ENGINE

Overall, technical data in new **KUBOTA** engine types has been added.

### CATERPILLAR

**C-9.3B** (on SAE J1939) engine control system, checks and maintenance services.

### CUMMINS

**X15** (on SAE J1939) engine control system, operation data and fuel consumption, checks, parameters, operating test of the exhaust gas aftertreatment system and injector coding.

### DEUTZ

⊕ **EMR4 EDC17 CV52** (on SAE J1939) engine control system for **TCD12.0** and **TCD16.0** engines.

### HATZ

⊕ **EDC17 C81** (on SAE J1939) engine control system.

New wiring diagram configurations available for the **4H50TIC** model.

### VM MOTORI

New wiring diagram configurations of the engine control system and the exhaust gas aftertreatment system available for **R756EU5**, **R754EU5**, **R754EU4**, **R756EU4**, **R754IE4** and **R754/R756 (Stage IV/EU6)** models.

## VOLVO PENTA

**EMS V3 Stage V** engine control system, Diesel Particulate Filter regeneration.

## YANMAR

Fault code troubleshooting guides for **Bosch** and **Denso** engine control systems.