



INNOVATIONS 23.3

SOFTWARE INNOVATIONS

The new software version Jaltest 23.3 once again offers more improvements and innovations that consolidate this tool as a benchmark in multi-brand diagnostics for commercial vehicles, agricultural equipment, OHW equipment, material handling equipment and vessels.

With the innovations of the graphic interface, it is possible to:

- Show the battery voltage during the system scan processes.
- Set the fault code display during the system scan processes.
- Hide the information panel in action steps with measurements.
- Restart the connection when losing the communication with systems in different sections of the application.
- Customize connection images.
- Set measurement groups in the data recorder function.

In addition, with GRP it is possible to associate diagnostics reports to license plates and/or VIN chassis numbers that do not belong to any vehicle from the list.

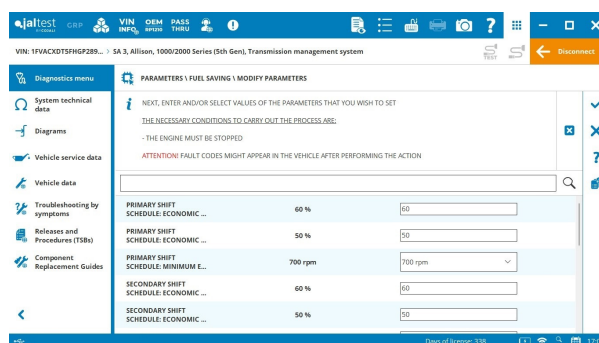
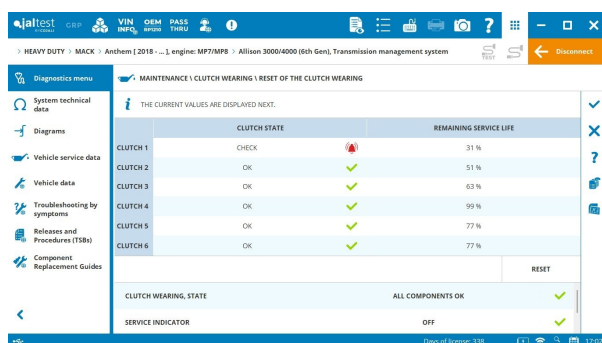
DIAGNOSTICS AND SYSTEMS

HEAVY DUTY VEHICLES

ALLISON

Allison 3000/4000 (6th Gen) transmission, adaptive shift reset, oil filter reset and clutch reset.

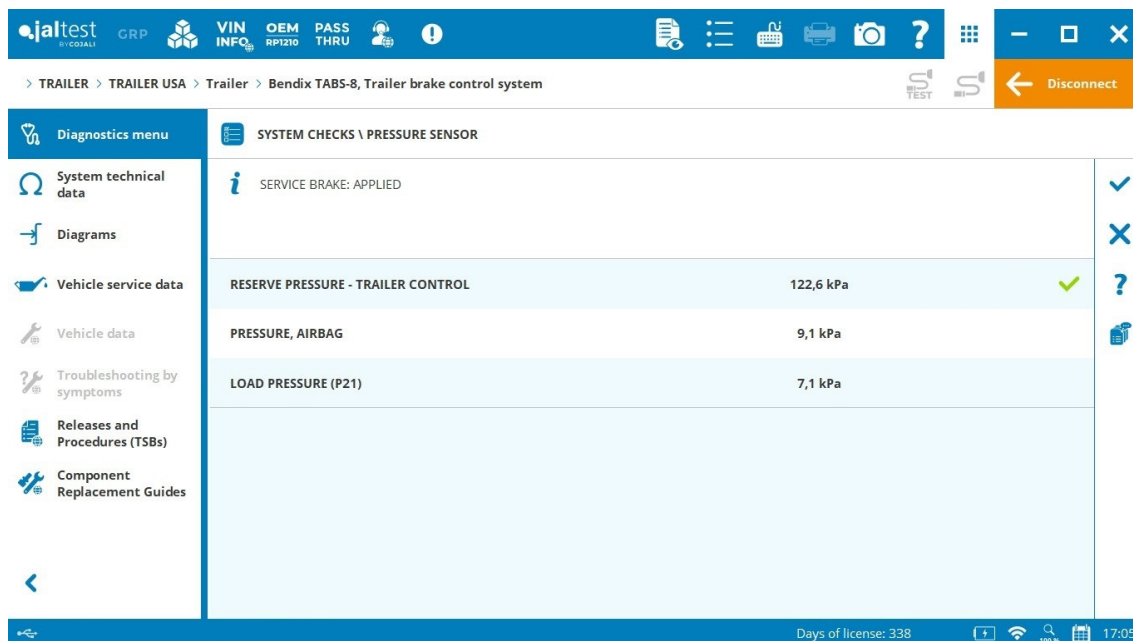
Allison 5th Gen transmission, new parameter groups such as FuelSense, ECU data and shift inhibitors.



BENDIX

TABS-8 trailer ABS brakes, activations to check wheel speed sensors, modulators and axle load and configuration of the installation angle.

SDP3 system, copy and paste parameters and the back-up function.

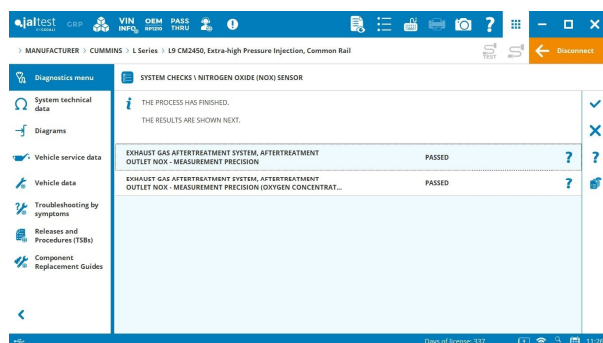


BATTLE MOTORS

New brand of trucks, Low Entry Tilt 2 & Low Narrow Tils models.

CUMMINS

Extended coverage in all **CUMMINS** systems especially in GHG21 systems with more than 500 new references and variants added.



GHG 21 engine systems:

- **B6.7, L9, X12/X15 CM2450** engine control system, bi-directional tests to check starter motor lockout, engine state monitoring and fast idle warmup.

- **L9 CM2450** engine control system, system checks to verify outlet NOx sensors, VGT actuator compatibility and injector coding.

GHG 17 engine systems:

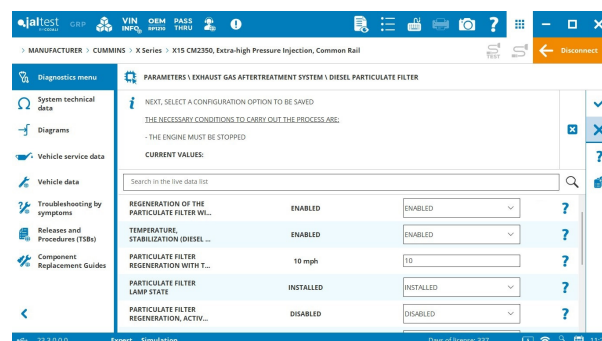
- **X12 & X15 CM2350** engine control system, injector coding and parameter configuration.

EPA13 engine systems:

- **ISB6.7 & ISL9 CM2350** engine control system, idle shutdown, start lockout, configuration of the aftertreatment system and transmission setting parameters.

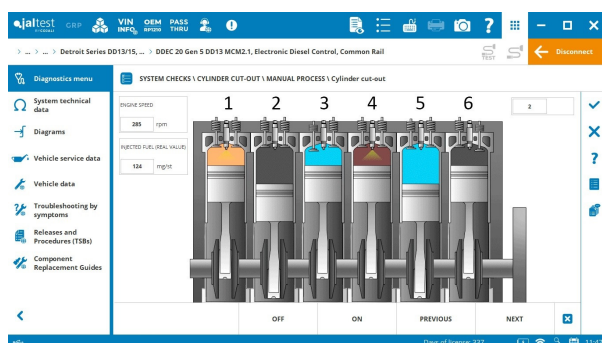
CNG engine systems:

- **X15N CM2380** engine control system, **SMART** guides.



Vehicle technical data and procedures such as the valve lash adjustment for **B6.7 B181 CM450** engine control system.

DETROIT DIESEL-MBE



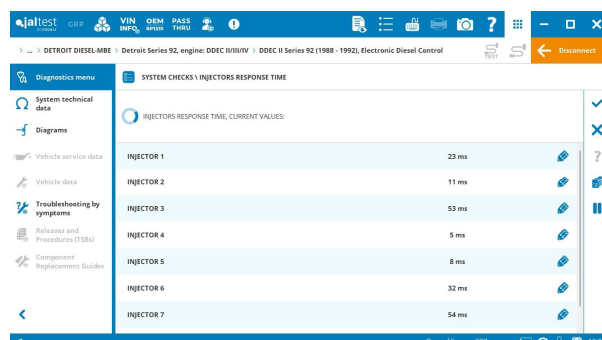
Extended coverage in all **DETROIT DIESEL-MBE** systems especially for 2023/2024 vehicles with new references and variants added. Furthermore, **DETROIT DIESEL-MBE** includes a new GIF System Display to simplify the cylinder cutout test interpretation.

DDEC13/16/20 EPA13 - GHG21 vehicles:

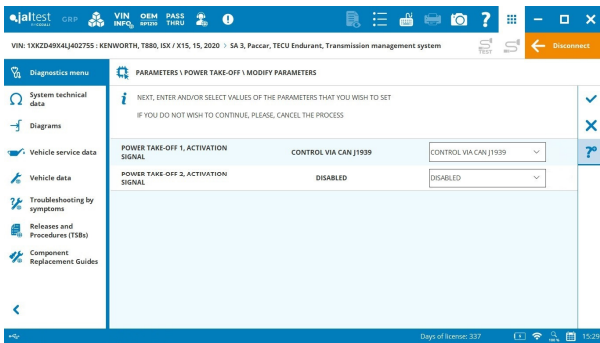
- **CPC4/CPC3EVO/CPC5 Base** powertrain module, accelerator pedal, optimized idle, engine brake and engine protection, among others parameters.
- **ACM2.1/ACM3** aftertreatment control system, **DEF metering cleaning**, procedure to clean the DEF metering module using Jaltest Tools for **EcoFit UL2** variants.
- **DT12** transmission, new variant for 2023/2024 vehicles, live data and bi-directional tests.

New vehicle technical data for **DD13/DD15 GHG21** engines and procedures such as the 'injector replacement' that applies to many engine types for **GHG21** engines.

DDEC III/IV Series 92 engine control system, bi-directional tests such as injector response, cylinder cut-out, system technical data, wiring diagrams and much more.



EATON

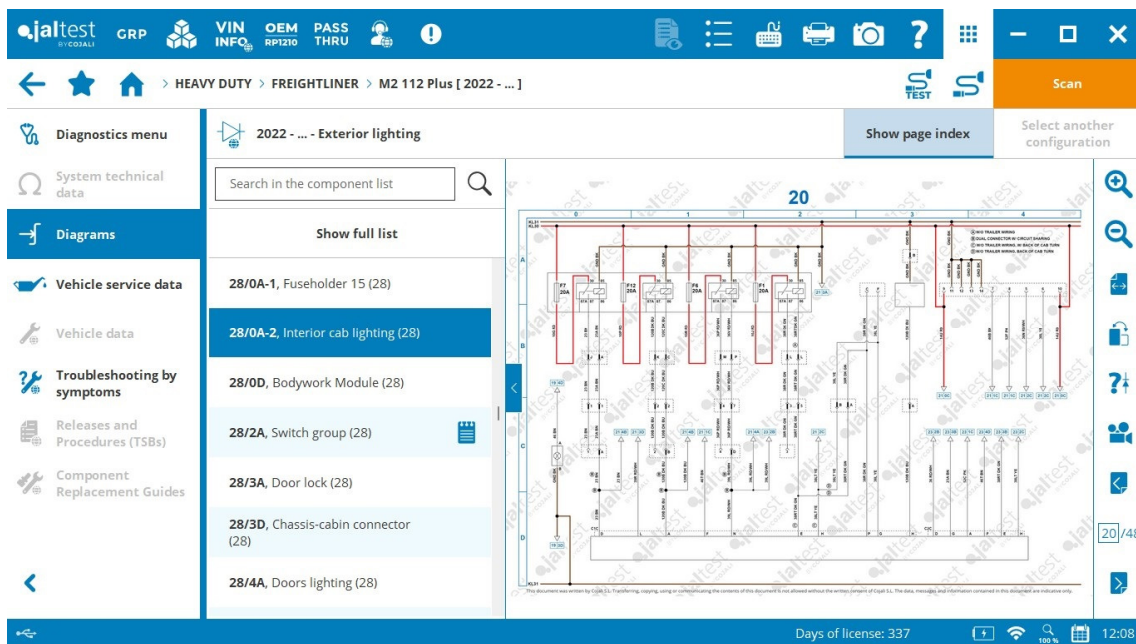


Endurant transmissions, new parameter groups such as Aux functions, hill assist, automatic neutral position or indicators, among others

FREIGHTLINER

Wiring diagrams that include the body builder connectors and their electrical connections in **M2 Plus, Cascadia Evolution** models.

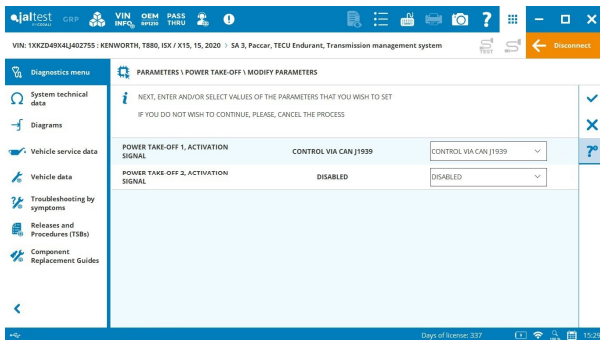
M2, Cascadia & New Cascadia modules add new references and variants especially for 2023/2024 vehicles.



INTERNATIONAL

⊕ **TPMS** Tire Pressure Monitoring System.

NAVISTAR



SCR engines:

⊕ **A26 (2022 - ...)** engine control system including wiring diagrams and **SMART guides**.

- **A26 GHG17** engine control system, new parameter groups such as engine protection, PTO or maximum vehicle speed, among others.

Procedures such as 'Oil and fuel filter change', 'Distribution phasing', 'DPF replacement' or 'fuel pump checking' for **A26** engines.

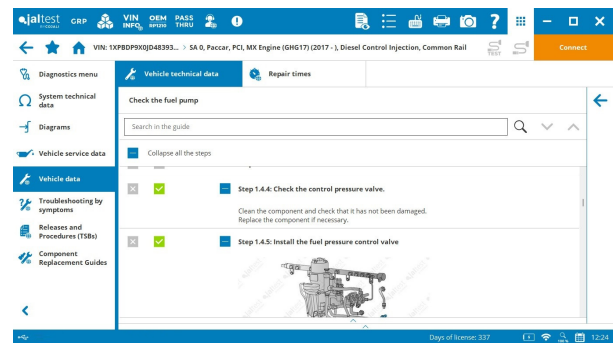
PACCAR

Extended coverage in all **PACCAR** systems, with more than 400 new **SMART** guides.

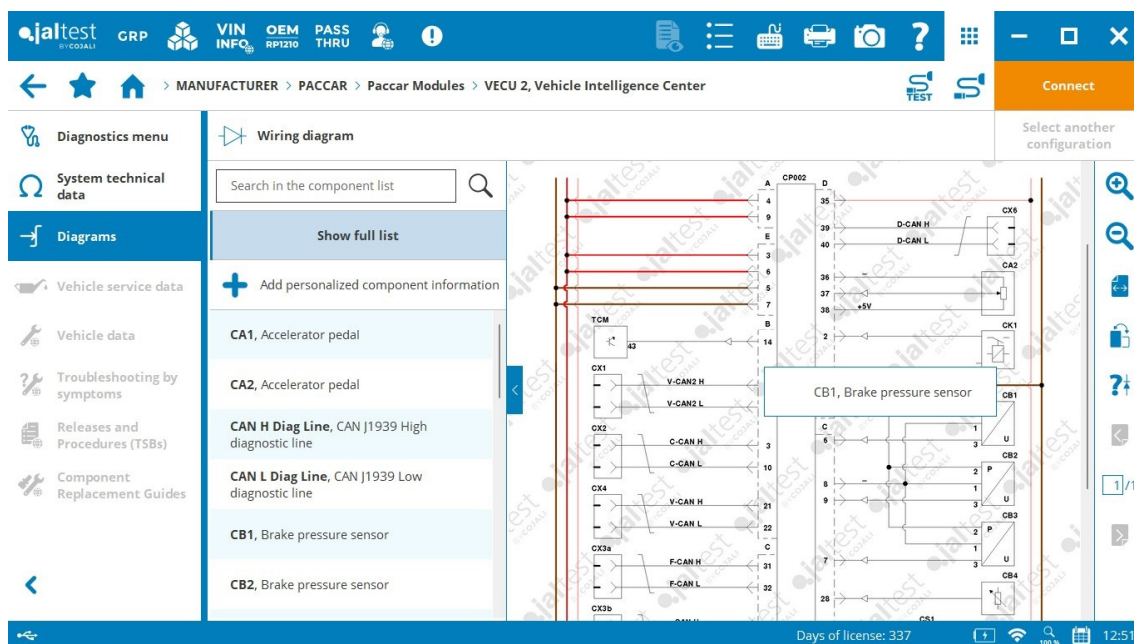
DEF metering cleaning, procedure to clean the DEF metering module using Jaltest Tools for **EcoFit UL2** variants and procedures such as 'fuel pump checking' that applies to many engine types for **PACCAR MX** engines.

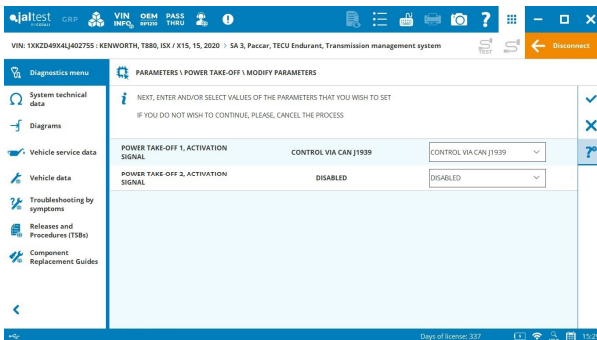
GHG 21 vehicles:

⊕ **SWS-2** steering wheel switch system.



VECU, VECU-2, DD, MSM, RHS, HVAC, CMP and **CMS** modules, wiring diagrams

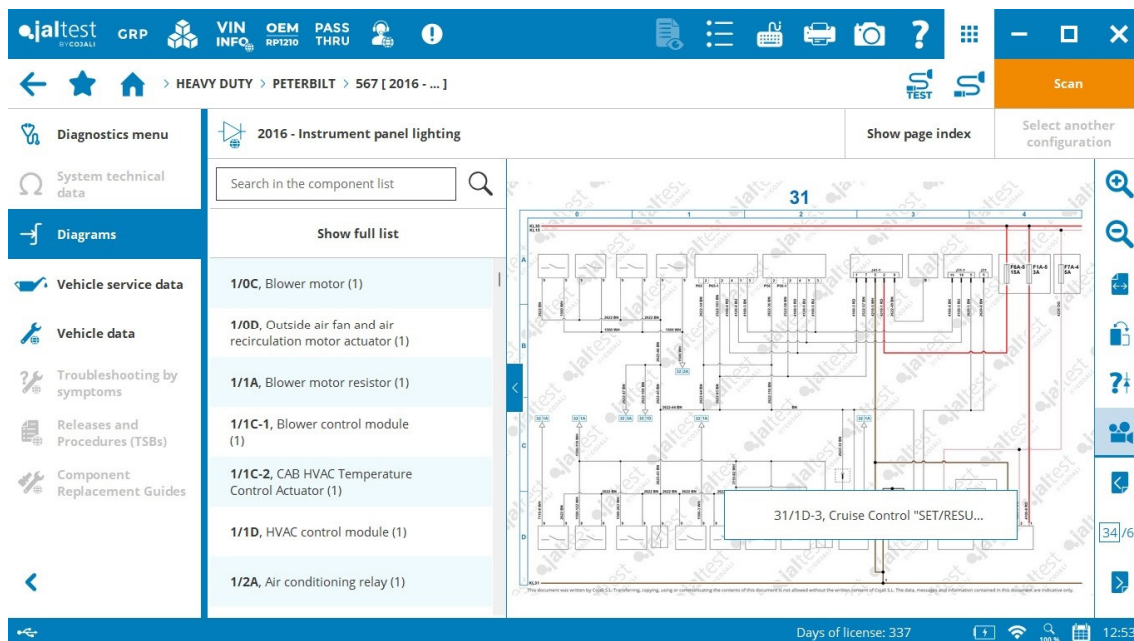




Endurant transmissions, new parameter groups such as Aux functions, hill assist, automatic neutral position or indicators, among others.

PETERBILT

Wiring diagrams that include the body builder connectors and their electrical connections in **300** and **500 Series** models.



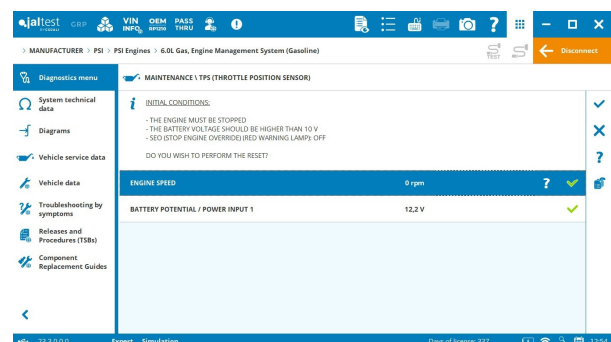
PSI

Gasoline engines:

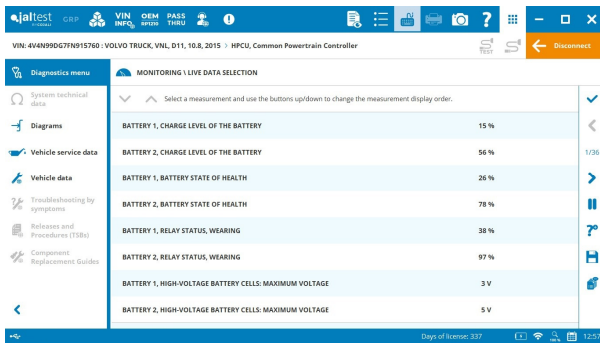
- **6.0L & 8.8L** engine control system, throttle position sensor reset.

LPG engines:

- **8.8L** engine control system, throttle position sensor reset and multiplier block learning process and reset.



VOLVO & MACK



US13-GHG21 vehicles:

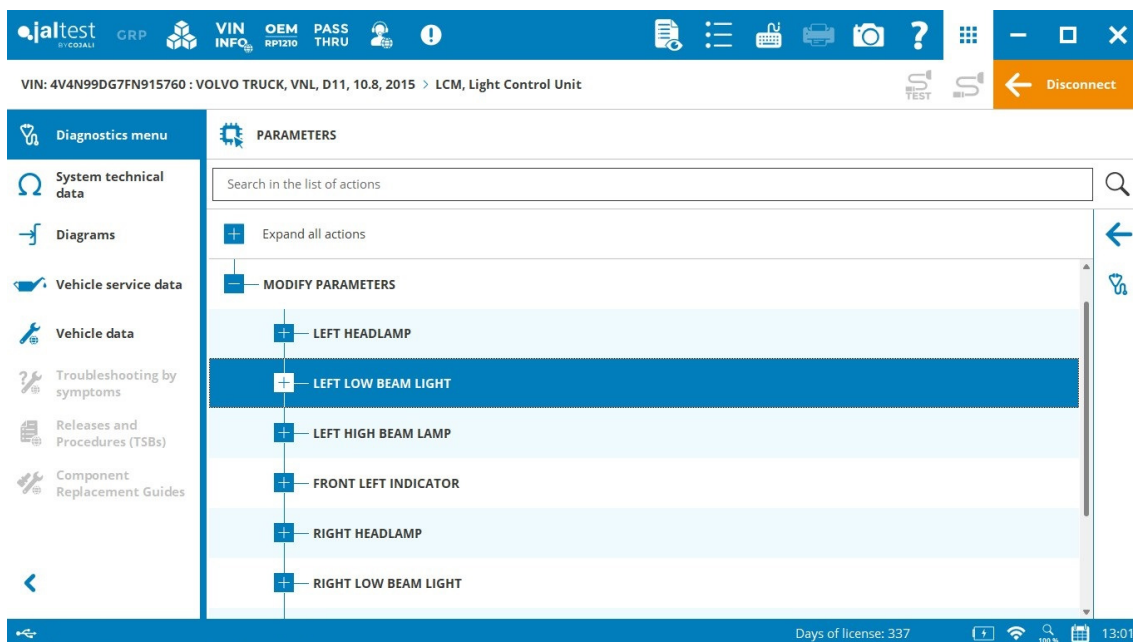
LCM light control system, lamp configuration (min – max amp).

TECU V3 transmission, performance mode configuration.

EMS V3 engine control system, parameter configuration such as the max vehicle speed with ECO level and the manual DPF regen enabling.

PCM, HPCU, EVCM modules, live data added in the **VNR Electric** model.

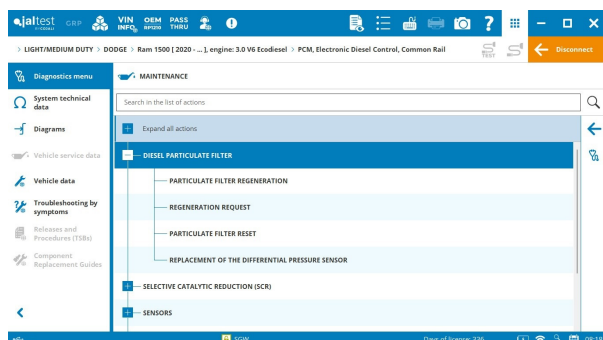
Wiring diagrams that include the body builder connectors and their electrical connections in **VNX Series** models.



LIGHT/MEDIUM DUTY

DODGE

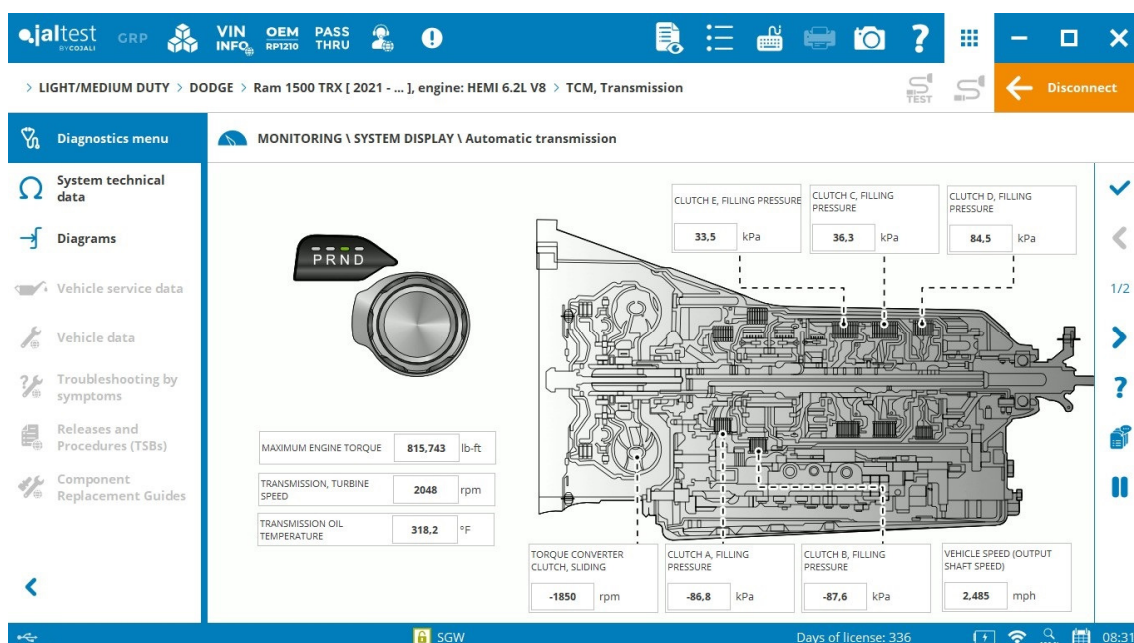
RAM 1500 [2019 - ...] models.



- ⊕ **PCM** engine control system
- ⊕ **ORC** airbag system
- ⊕ **BCM** central computer
- ⊕ **EPS** steering system
- ⊕ **HVAC** heating, ventilation and air conditioning
- ⊕ **ICS** climate control system
- TCM** transmission

New **RAM 1500 TRX HEMI 6.2 V8 [2022 - ...]** model.

Wiring diagrams that include the body builder connectors and their electrical connections in **RAM 1500 (DT/DS)** models.



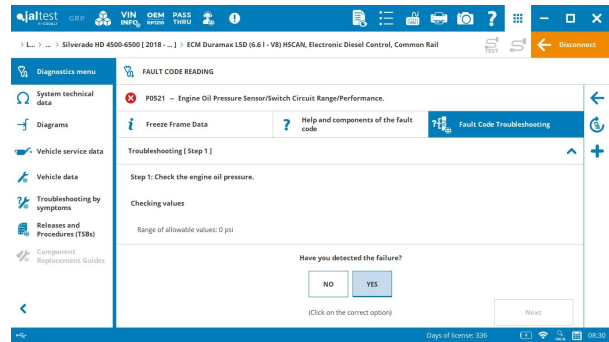
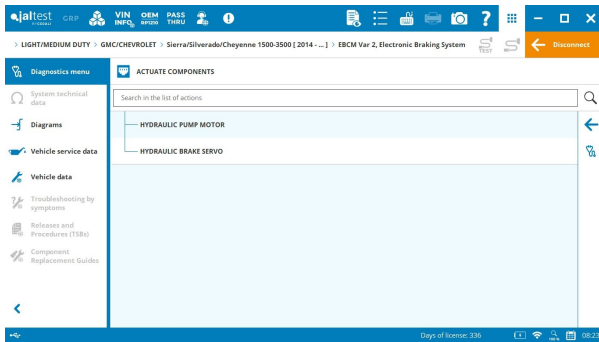
FORD

⊕ **RCM 2019 - ...** airbag system in the **F/E-series [2019 - ...]** model.

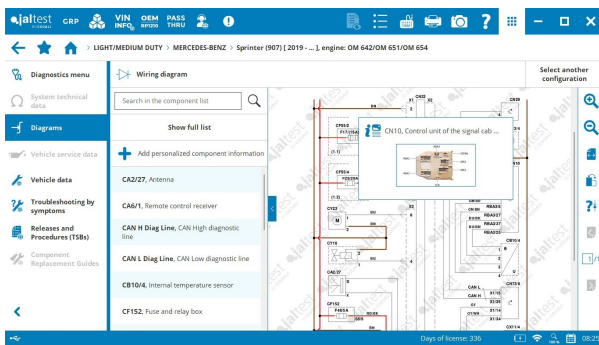
GMC/CHEVROLET

L20, LV3, LC8 & L5D engine control system, **SMART** guides.

⊕ **EBCM Var 2** brake system in **Sierra/Silverado/Cheyenne 1500-3500 [2019 - ...]**.



MERCEDES-BENZ



New wiring diagram configurations available for several systems such as **ENR, STH, CRR2, BSN/IBS, OCP** or **ISM** in **Sprinter 906/907** and **Vito-Metris 447** models.

⊕ **ENR** suspension control system in the **Sprinter 906** model.

Parameters of the transport mode in **Sprinter 906/907**.

BUS

BLUE BIRD

Wiring diagrams that include the body builder connectors and their electrical connections in **Conventional, All American RE** models.

